



SUDHIR TAILANG TRUST

ANNUAL REPORT

**2024 -
2025**





ABOUT THE ORGANIZATION

Sudhir Tailang Trust is a non-profit organization established in 2023 in Delhi with a clear mandate to serve marginalized and underserved communities through inclusive, ethical, and sustainable interventions. The Trust was founded with the belief that lasting social transformation is possible only when immediate support is combined with long-term capacity building.

The organization works across critical development sectors including Education & Literacy, Health & Family Welfare, Women's Empowerment, Skill Development, Environment & Sustainability, and support for the Aged and Vulnerable Groups. Each program is designed to address real, on-ground needs while strengthening self-reliance, dignity, and social equity among beneficiaries.

In addition to its direct programs, the Trust actively believes in collaboration and collective responsibility. By supporting allied organizations and contributing to broader social causes, Sudhir Tailang Trust strengthens the ecosystem of social development and reinforces its mission of inclusive nation-building.

INTRODUCTION

Sudhir Tailang Trust is a values-driven non-profit organization committed to advancing social equity, human dignity, and sustainable development. The financial year 2024–2025 represents a phase of continuity and consolidation for the Trust, wherein its core programs and social commitments were carried forward with renewed focus, accountability, and community engagement.

This Annual Report presents an overview of the Trust’s philosophy, governance, and activities undertaken during the year. While the nature of interventions remained consistent with the previous financial year, the emphasis during 2024–2025 was on strengthening implementation, deepening impact, and reinforcing collaborative efforts within the social sector.

The report also reflects the Trust’s belief in collective responsibility, highlighted through its philanthropic contribution to allied social organizations such as Aditi Foundation. Through sustained service and ethical governance, Sudhir Tailang Trust continues to work towards inclusive nation-building and long-term community well-being.



PRESIDENT'S MESSAGE

As the President of Sudhir Tailang Trust, I am pleased to present the Annual Report for the financial year 2024–2025. During this year, the Trust continued its commitment to uplifting marginalized communities through focused and compassionate interventions across education, healthcare, women's empowerment, environmental sustainability, and social welfare.

The year 2024–2025 marked a phase of consolidation and continuity. Building upon the foundation laid in the previous year, we sustained our core activities with deeper community engagement and improved outreach. Our initiatives continued to touch the lives of children, women, senior citizens, and economically vulnerable families by providing educational support, healthcare assistance, skill development opportunities, and social security.

I take this opportunity to express my sincere gratitude to our trustees, volunteers, partners, and donors whose unwavering support made our work possible. A special note of appreciation is extended for enabling us to contribute towards philanthropic causes beyond our direct programs, including our donation to Aditi Foundation, reinforcing our belief in collaborative social impact.

As we move forward, Sudhir Tailang Trust remains steadfast in its mission to serve society with integrity, compassion, and purpose. Together, we look forward to creating sustainable and meaningful change.

Vibha Tailang
President, Sudhir Tailang Trust



THE OBJECTIVE

The primary objectives of Sudhir Tailang Trust are aligned with its mission of inclusive development and social empowerment. The Trust seeks to create measurable and lasting impact through the following objectives:

- To promote access to quality education and literacy among children and youth from economically and socially disadvantaged backgrounds.
- To improve health outcomes by facilitating access to healthcare services, preventive care, and health awareness initiatives for vulnerable communities.
- To empower women through skill development, financial literacy, and livelihood-oriented programs that enhance economic independence and leadership capacity.
- To support senior citizens, economically weaker sections, and vulnerable groups by addressing their basic needs, healthcare requirements, and social well-being.
- To encourage environmental sustainability through awareness, conservation activities, and promotion of eco-friendly practices.
- To foster community participation, collaboration, and responsible citizenship in addressing social challenges.
- To support and collaborate with like-minded organizations and foundations in advancing collective social welfare initiatives.

VISION

Sudhir Tailang Trust envisions a society where every individual, irrespective of socio-economic background, has equal access to opportunities, resources, and support necessary to live a life of dignity, security, and purpose.

The Trust aspires to build inclusive and empowered communities where education enables transformation, healthcare ensures well-being, women lead with confidence, vulnerable groups are protected, and environmental responsibility is embraced as a shared duty. Through sustained social action and ethical governance, the Trust seeks to break cycles of deprivation and create pathways for long-term self-reliance.

Our vision is rooted in compassion, collaboration, and sustainability—working towards a future where social equity is not an aspiration but a lived reality, and where collective progress strengthens the foundation of a just and humane society.

MISSION

The mission of Sudhir Tailang Trust is to uplift and empower marginalized and underserved communities by addressing their immediate needs while creating sustainable pathways for long-term social and economic development.

The Trust is committed to promoting access to quality education, improving healthcare awareness and services, empowering women through skill development and livelihood support, and ensuring care and dignity for the aged and vulnerable sections of society. Through community-based initiatives, ethical governance, and collaborative partnerships, the Trust works to strengthen self-reliance, social inclusion, and human dignity.

Guided by compassion, integrity, and accountability, Sudhir Tailang Trust seeks not merely to provide assistance, but to enable individuals and communities to overcome challenges, realize their potential, and contribute meaningfully to the collective progress of society.

CORE VALUES

The core values of Sudhir Tailang Trust define its identity and guide every initiative, decision, and partnership. These values ensure that the Trust's work remains ethical, inclusive, and focused on long-term social impact.

Inclusivity

The Trust is committed to serving all sections of society, with particular focus on marginalized and underserved communities, ensuring equitable access to opportunities and support without discrimination.

Integrity

Transparency, accountability, and ethical conduct form the foundation of the Trust's governance and operations, fostering trust among beneficiaries, partners, and stakeholders.

Compassion

Every initiative of the Trust is driven by empathy and respect for human dignity, recognizing the unique challenges faced by individuals and communities.

Empowerment

The Trust believes in enabling individuals to become self-reliant by providing knowledge, skills, and resources that support long-term independence and confidence.

Collaboration

Meaningful social change is achieved through partnerships. The Trust values cooperation with communities, institutions, volunteers, and like-minded organizations to amplify impact.

Excellence

The Trust strives for high standards in program design, implementation, and evaluation to ensure effective and measurable outcomes.

Sustainability

Long-term impact is prioritized through initiatives that promote environmental responsibility, resource efficiency, and enduring social benefits.

Respect

The Trust honors cultural diversity, community values, and individual perspectives, fostering mutual understanding and inclusive engagement.

FUTURE ROADMAP (2025–26 AND BEYOND)

Sudhir Tailang Trust's future roadmap is guided by a commitment to consolidation, sustainability, and deepening social impact. Rather than rapid expansion, the Trust envisions strengthening its existing programs to ensure long-term effectiveness, community ownership, and measurable outcomes.

In the coming years, the Trust aims to enhance the quality and reach of its education and healthcare initiatives by focusing on structured program design, improved monitoring, and stronger engagement with beneficiaries. Emphasis will be placed on outcome-oriented interventions that create lasting value rather than short-term relief.

Women's empowerment and skill development will continue to be a priority area, with plans to introduce more livelihood-linked training, financial literacy support, and mentorship opportunities that enable women to achieve economic independence and leadership roles within their communities.

Environmental sustainability will remain an integral part of the Trust's roadmap. Future efforts will focus on increasing awareness, promoting responsible environmental practices, and encouraging community participation in conservation initiatives to ensure a healthier and more sustainable future.

The Trust also plans to strengthen its institutional capacity by improving governance frameworks, documentation, and transparency practices. Building strategic partnerships with like-minded organizations and institutions will be a key focus, enabling knowledge sharing and collaborative action for broader social impact.

Through this measured and responsible approach, Sudhir Tailang Trust seeks to evolve as a credible, resilient, and impact-driven organization—committed to inclusive development, ethical action, and the long-term well-being of the communities it serves.



ACTIVITIES UNDERTAKEN DURING 2024–2025

The financial year 2024–2025 focused on continuity, depth, and quality of impact. While the core nature of activities remained consistent with the previous year, efforts were strengthened through improved planning, closer community engagement, and enhanced coordination with stakeholders.

Education and Literacy Initiatives

During the year, Sudhir Tailang Trust sustained its educational initiatives aimed at supporting children from underprivileged backgrounds. Activities included distribution of books and stationery, educational assistance to students, and awareness programs emphasizing the importance of education, particularly for girls.

Healthcare and Family Welfare

The Trust continued to facilitate healthcare access through medical assistance, health awareness initiatives, and financial support for treatment of economically disadvantaged individuals. These efforts focused on preventive care, hygiene awareness, and emergency medical support.



Women's Empowerment and Skill Development

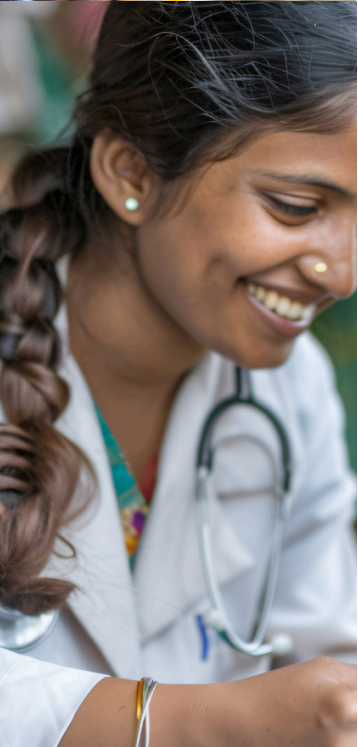
Women empowerment remained a priority area. Skill development programs, vocational guidance, and financial literacy support were continued to enhance women's self-reliance and economic participation

Environment and Sustainability

Environmental responsibility was upheld through continued emphasis on environmental awareness, tree plantation initiatives, and promotion of eco-friendly practices within communities.

Support for the Aged and Vulnerable Groups

The Trust extended support to senior citizens, low-income families, and vulnerable individuals by providing essential assistance including food, medical aid, and social support.

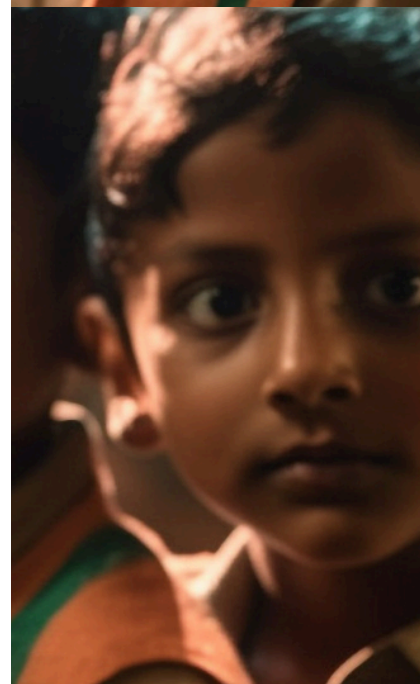
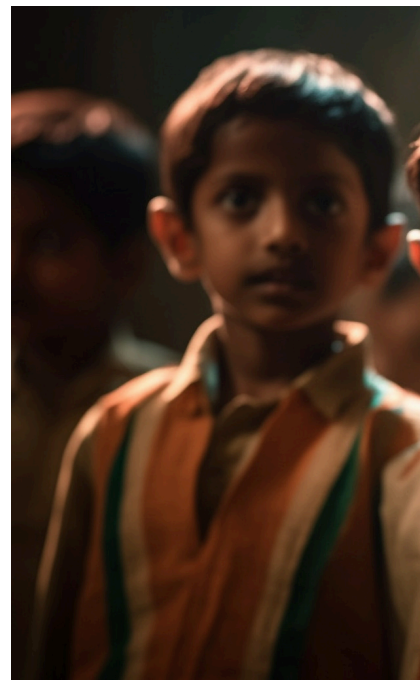


PHILANTHROPIC CONTRIBUTION

In alignment with its philosophy of collective social responsibility, Sudhir Tailang Trust extended support beyond its direct operational programs during the financial year 2024–2025.

A charitable donation was made to Aditi Foundation, an organization engaged in social welfare initiatives. This contribution reflects the Trust's belief that collaboration among like-minded institutions accelerates social progress and multiplies impact.

By supporting allied organizations, the Trust reinforces its commitment to strengthening the broader ecosystem of social development.





PARTNERSHIPS AND COLLABORATIONS

Partnerships continued to play a crucial role in enhancing the reach and effectiveness of the Trust's initiatives. During the year, Sudhir Tailang Trust worked alongside local community groups, volunteers, and social institutions to implement programs efficiently.

These collaborations enabled sharing of resources, exchange of knowledge, and better identification of grassroots needs. The Trust values long-term relationships built on mutual trust and aligned social objectives, which remain central to achieving sustainable outcomes.

The Trust continued to collaborate with local organizations, volunteers, and social institutions to strengthen program delivery and maximize community impact. These partnerships enhanced outreach and ensured effective utilization of resources.



MONITORING, GOVERNANCE & ACCOUNTABILITY

Sudhir Tailang Trust follows a structured governance framework to ensure transparency, accountability, and compliance with statutory requirements. Program implementation is periodically reviewed to assess effectiveness, relevance, and community feedback.

Financial records are maintained systematically, and resources are utilized strictly in alignment with the Trust's objectives. This disciplined approach ensures donor confidence and strengthens institutional credibility.

Contact Us



+91 9910083047



vibhatailang@gmail.com